



Extension Agronomy

eUpdate

12/01/2017

These e-Updates are a regular weekly item from K-State Extension Agronomy and Kathy Gehl, Agronomy e-Update Editor. All of the Research and Extension faculty in Agronomy will be involved as sources from time to time. If you have any questions or suggestions for topics you'd like to have us address in this weekly update, contact Kathy Gehl, 785-532-3354 kgehl@ksu.edu, or Curtis Thompson, Extension Agronomy State Leader and Weed Management Specialist 785-532-3444 cthompso@ksu.edu.

Subscribe to the eUpdate mailing list: <https://listserv.ksu.edu/cgi-bin?SUBED1=EUPDATE&A=1>

1. K-State Soybean Schools scheduled for late January.....	3
2. 2018 Kansas Corn Management Schools.....	5
3. Rotational grazing to be highlighted at Winter Forage Conference, December 12.....	7
4. Coming this December - The 2017 Census of Agriculture.....	8
5. Comparative Vegetation Condition Report: November 21 - November 27, 2017	10

1. K-State Soybean Schools scheduled for late January

A series of three K-State Soybean Production Schools will be offered in late January 2018 to provide in-depth training targeted for soybean producers and key stakeholders. The schools will be held at three locations around the state.

The one-day schools will cover a number of issues facing soybean growers including: weed control strategies, production practices, nutrient fertility, and insect and disease management.

The dates and locations of the K-State Soybean Production Schools are:

January 22 – Phillipsburg, KS

Phillips County Fair Building, 1481 US-183
Cody Miller, Phillips-Rooks District, codym@ksu.edu, 785-543-6845

January 23 – Salina, KS

Webster Conference Center, 2601 North Ohio
Tom Maxwell, Central Kansas District, tmaxwell@ksu.edu, 785-309-5850

January 24 – Rossville, KS

Citizen Potawatomi Nation Center, 806 Nishnabe Trail
Leroy Russell, Shawnee Co., lrussell@ksu.edu, 785-232-0062

Lunch will be provided courtesy of Kansas Soybean Commission (main sponsor of the schools). The schools will also be supported by Channel Seeds. There is no cost to attend, however participants are asked to pre-register by January 17.

Online registration is available at: [K-State Soybean Schools](#)

You can also preregister by emailing or calling the local K-State Research and Extension office for the location you plan to attend.



Ignacio Ciampitti, Crop Production and Cropping Systems Specialist
ciampitti@ksu.edu

Doug Shoup, Southeast Area Crops and Soils Specialist
dshoup@ksu.edu

Stu Duncan, Northeast Area Crops and Soils Specialist
sduncan@ksu.edu

2. 2018 Kansas Corn Management Schools



We are excited to announce the three regional 2018 Corn Management Schools.

Central Kansas: Monday, January 8, Hesston
AGCO building, 420 W. Lincoln Blvd

Western Kansas: Tuesday, January 9, Garden City
Clarion Inn, 1911 E. Kansas Ave.

Eastern Kansas: Friday, January 12, Leavenworth
The Barn, 17624 Santa Fe Trail

Topics are focused on agronomic practices and research updates. Each school's sessions are designed to fit the farmers in the region. Topics include:

- Weed control
- Production Management
- Nutrient Management
- Insect update
- Disease update
- Planter technology update
- Corn marketing and price update
- Usable Corn Condition Progress Tools

Schools are free to attend thanks to the generous support of DuPont Pioneer and Kansas Corn. Lunch is included, so please pre-register online at: KScorn.com/Cornschoo

You can also register with KSRE local extension offices.

Hesston School:

Ryan Flaming, Harvey County, flaming@ksu.edu 316-284-6930

Zach Simon, Sedgwick County, zsimon@ksu.edu 316-660-0153

Darren Busick, Reno County, darrenbusick@ksu.edu 620-662-2371
Jake Renner, Kingman County, jwrenner@ksu.edu 620-532-5131
David Kehler, Butler County, dkeehler@ksu.edu 316-321-9660
Rickey Roberts, Marion County, rroberts@ksu.edu 620-382-2325
Shad Marston, McPherson County, smarston@ksu.edu 620-241-1523

Garden City School:

AJ Foster, Southwest Area Crops and Soils Specialist; anserdj@ksu.edu
Andrea Burns, Ford County, aburns@ksu.edu, 620-227-4542
Kurt Werth, Grey County, kwerth@ksu.edu, 620-855-3821
Lacey Noterman, Haskell County, lnote@ksu.edu, 620-675-2261
Bill Haney, Kearny County, haney@ksu.edu, 620-355-6551
John Beckman, Scott County, jbeckman@ksu.edu, 620-872-2930

Leavenworth School:

Karol Lohman, Leavenworth County, klohman@ksu.edu, 913-364-5700
Jessica Barnett, Johnson County, Jessica.barnett@jocogov.org 913-715-7000
David Hallauer, Meadowlark District, dhallaue@ksu.edu, 785-863-2212
Ray Ladd, Atchinson County, clad@ksu.edu 913-833-5450
Roberta Wyckoff, Douglas County, rwyckoff@ksu.edu, 785-843-7058
Leroy Russell, Shawnee County, lrussell@ksu.edu, 785-232-0062
Darren Hibdon, Frontier District, dhibdon@ksu.edu, 785-229-3520
Abbie Powell, Marais des Cygnes District, abbie2@ksu.edu, 913-795-2829

For more information, contact:

Stacy Mayo-Martinez, Kansas Corn Director of Industry Relations
smayo@ksgrains.com

Ignacio A. Ciampitti, Crop Production & Cropping Systems Specialist
Ciampitti@ksu.edu

3. Rotational grazing to be highlighted at Winter Forage Conference, December 12

Kansas State University and the Kansas Forage and Grassland Council (KSFGC) will hold its Winter Forage Conference and KSFGC Annual Meeting on Tuesday, December 12, 2017, at the Webster Conference Center, 2601 North Ohio, Salina, KS.

Registration begins at 8:30 a.m. and the conference kicks off at 9:00 a.m. Rotational Grazing will be the focus of one tract with presentations from NRCS Specialists Dusty Tacha and Doug Spencer, along with UNL Range Beef Nutritionist Dr. Travis Mulliniks. The tract will be topped off with Grower Panel of Kansas ranchers.

Other breakout sessions from Kansas State University and industry experts will cover topics including: Alfalfa Pests & Predators, Non-GMO Alfalfa, and an Alfalfa Industry Update from Beth Nelson, President of the National Alfalfa & Forage Alliance.

“Current and Future Kansas Forage Trends” will be the keynote address by Dr. Mike Brouk, Professor, Animal Science & Industry, Kansas State University.

Conference registration is open to the public and is free to 2018 Kansas Forage and Grassland Council members. For non-members and those that have not yet renewed for 2018, the cost is \$45, which includes both KSFGC and AFGC membership, along with subscriptions to both Progressive Forage Grower and Hay & Forage Magazines.

More information regarding the conference including registration (which is encouraged for planning and meal counts), the agenda, and information for businesses, vendors, and forage industry boosters can be found at <https://ksfgc.org/wkfc/>.

Please direct any questions to Mark Nelson at info@ksfgc.org or (785) 587-6103

4. Coming this December - The 2017 Census of Agriculture

Kansas farmers and ranchers have the opportunity to make a positive impact on their communities by participating in the 2017 Census of Agriculture. Conducted every five years by the USDA's National Agricultural Statistics Service (NASS), the Census of Agriculture is a complete count of all U.S. farms and ranches as well as those who operate them.

The Census is the only source of uniform, comprehensive agricultural data for every county in the nation. It is a critical tool that gives producers a voice to influence decisions shaping the future of their community, industry and operation. The Census looks at land use and ownership, operator characteristics, production practices, income, expenditures, and other topics. This information is used by all who serve farmers and rural communities from federal, state and local governments to agribusinesses and trade associations. Answers to the Census impact farm programs and rural services that support Kansas communities. So whether you're rural or urban, working thousands of acres or just a few plots, your information matters.

Census forms will be mailed to producers in December. Completed forms are due by **February 5, 2018**. Producers may complete the Census online via a [secure website](#), or return their forms by mail.

"The updated online questionnaire is very user-friendly – it can now be used on any electronic device, and can be saved and revisited as the producer's schedule allows," said NASS Census and Survey Division Director Barbara Rater. "Responding online saves time and protects data quality. That's our mission at NASS – to provide timely, accurate, and useful statistics in service to U.S. agriculture. Better data mean informed decisions, and that's why it is so important that every producer respond and be represented."

Federal law requires all agricultural producers to participate in the Census and requires NASS to keep all individual information confidential. Remember, the Census of Agriculture is your voice, your future, your opportunity. Respond when you receive your census in December.

For more information about the process, including a list of frequently asked questions, please visit www.agcensus.usda.gov.



2017 CENSUS OF AGRICULTURE
YOUR VOICE. YOUR FUTURE. YOUR OPPORTUNITY.



COMING THIS DECEMBER
www.agcensus.usda.gov

5. Comparative Vegetation Condition Report: November 21 - November 27, 2017

The weekly Vegetation Condition Report maps below can be a valuable tool for making crop selection and marketing decisions.

The objective of these reports is to provide users with a means of assessing the relative condition of crops and grassland. The maps can be used to assess current plant growth rates, as well as comparisons to the previous year and relative to the 28-year average. The report is used by individual farmers and ranchers, the commodities market, and political leaders for assessing factors such as production potential and drought impact across their state.

The Vegetation Condition Report (VCR) maps were originally developed by Dr. Kevin Price, K-State professor emeritus of agronomy and geography, and his pioneering work in this area is gratefully acknowledged.

The maps have recently been revised, using newer technology and enhanced sources of data. Dr. Nan An, Imaging Scientist, collaborated with Dr. Antonio Ray Asebedo, assistant professor and lab director of the Precision Agriculture Lab in the Department of Agronomy at Kansas State University, on the new VCR development. Multiple improvements have been made, such as new image processing algorithms with new remotely sensed data from EROS Data Center.

These improvements increase sensitivity for capturing more variability in plant biomass and photosynthetic capacity. However, the same format as the previous versions of the VCR maps was retained, thus allowing the transition to be as seamless as possible for the end user. For this spring, it was decided not to incorporate the snow cover data, which had been used in past years. However, this feature will be added back at a later date. In addition, production of the Corn Belt maps has been stopped, as the continental U.S. maps will provide the same data for these areas. Dr. Asebedo and Dr. An will continue development and improvement of the VCRs and other advanced maps.

The maps in this issue of the newsletter show the current state of photosynthetic activity in Kansas, and the continental U.S., with comments from Mary Knapp, assistant state climatologist:

Kansas Vegetation Condition

Period 48: 11/21/2017 - 11/27/2017

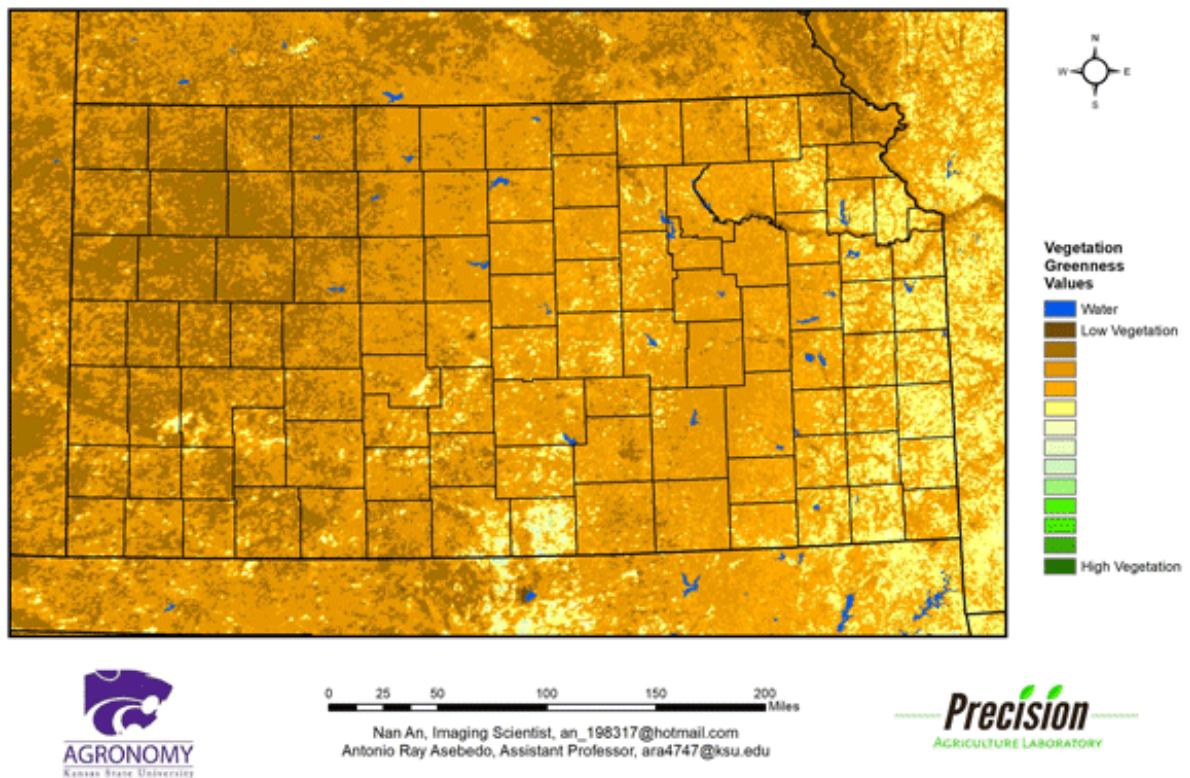


Figure 1. The Vegetation Condition Report for Kansas during November 21 – November 27, 2017 from K-State’s Precision Agriculture Laboratory shows little vegetative activity this week since the growing season has ended. Temperatures averaged 9.5 degrees F warmer-than-normal for the week, but precipitation averaged zero with only trace amounts reported.

Kansas Vegetation Condition Comparison
Late-November 2017 compared to the Late-November 2016

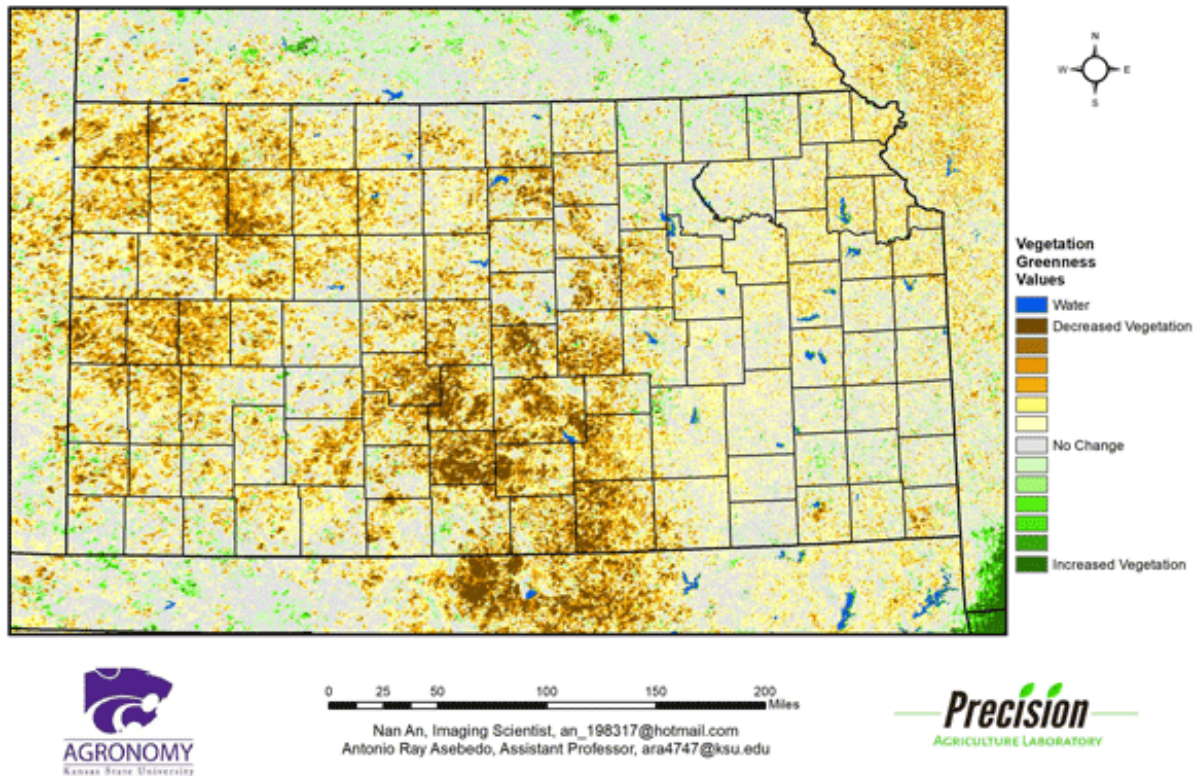


Figure 2. Compared to the previous year at this time for Kansas, the current Vegetation Condition Report for November 21 – November 27, 2017 from K-State’s Precision Agriculture Laboratory shows a decrease in vegetative activity. This is particularly true in the central and south central parts of the state where drought conditions are developing.

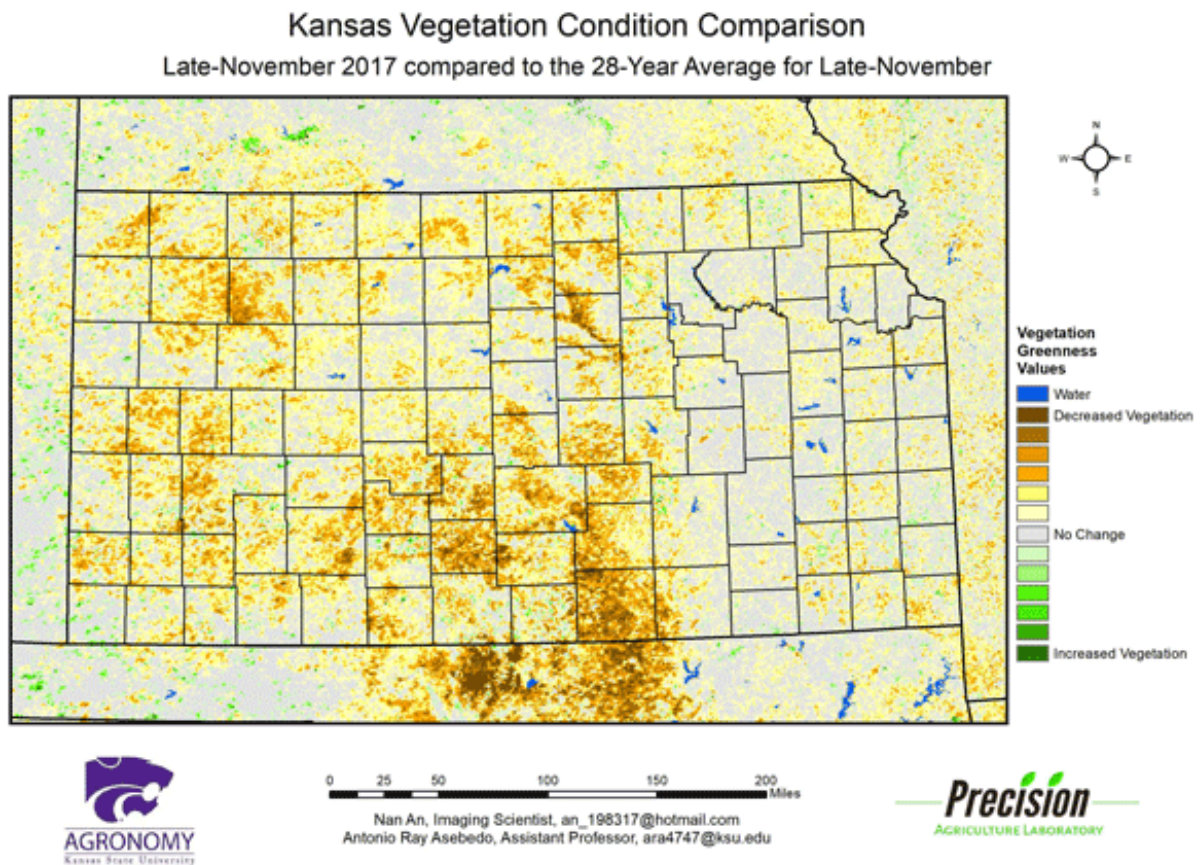


Figure 3. Compared to the 28-year average at this time for Kansas, this year's Vegetation Condition Report for November 21 – November 27, 2017 from K-State's Precision Agriculture Laboratory show below-average conditions across the South Central division. A lack of moisture limited the amount of fall growth.

Due to satellite data issues, there are no national maps available this week.

Mary Knapp, Weather Data Library
mknapp@ksu.edu

Ray Asebedo, Precision Agriculture
ara4747@ksu.edu

Nan An, Imaging Scientist
an_198317@hotmail.com